



Asphalt Rubber Blending

Scalable Asphalt Rubber Blending System

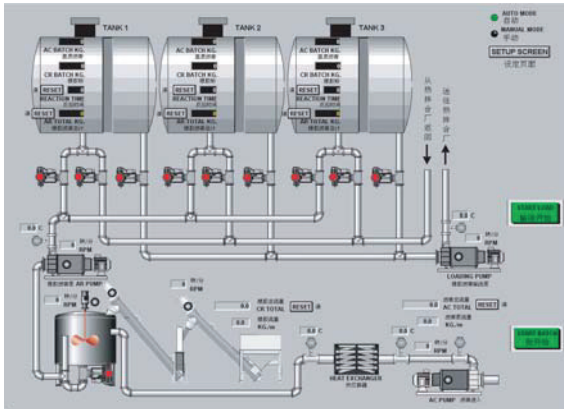
Answering the needs of HOT MIX Plant owners. VSS Macropaver responds with an innovative design that allows single operator control of the Hot Mix Plant and the Asphalt Rubber Blending/Reacting Plant.

Key Benefits of Asphalt Rubber Roads

- PAVEMENT DURABILITY
- RECYCLING OF SCRAP TIRES
- SAFETY (TRACTION)
- NOISE REDUCTION

Utilizing the ideas modernized over 30 years of field experience and design perfection in conjunction with our sister companies, VSS International and VSS Emultech, we proudly introduce this break through in Asphalt-Rubber roads; a Scalable Asphalt Rubber Blending System, so convenient, that you can position it at your Hot Mix Plant site and control it from your existing Plant Control Room. Other than labor to keep material supplies loaded, you do not need an additional operator on the project.

Scalable Asphalt Rubber Blending System



TYPICAL A-R PRODUCTION PLANT SIZES HOT MIX PLANT SIZES

12.5 tph.....	80 to 120 tph
25.0 tph.....	140 to 250 tph
35.0 tph.....	250 to 350 tph

The VSS A-R Blending System output varies depending upon tank sizes and quantity

The VSS A-R Blending System is comprised of the following:

CRUMB RUBBER BLEND/CONTROL SKID:

One (1) skid mounted Control System and Crumb Rubber Feeder/Blender System. The control system automatically proportions operator defined recipes for continuous or batch production. The blender system can be configured to feed into 1 to 3 reaction tanks allowing for a scalable production rate. The unit is complete with:

- A-R System Control
- Crumb Rubber Feed Unit, includes Crumb Rubber Hopper, Rubber Weigh System, and Rubber Feed System
- Asphalt Feed System, includes AC Loading Pump, AC Mass Flow Sensor, A-R Transfer Pump, A-R Loading Pump and Automated Valve System
- Hot Oil Heater - 2 or 3.6 MBTU (for 22.5 or 35 tph blend rates)
- Heat Exchanger: to raise AC temperature 85°F (47°C)
- Skid Frame: One heavy-duty steel fabricated frame. Overall size fits ocean container
- Power: 165 Amp 460 V or 200 Amp 380 V, 3-phase power required

REACTION TANKS:

Optional skid mounted Reaction Vessels: Production Rates

Blend Rate	22.5 tph	35 tph
Single 8,000 gal. (30,300 liter)	(1 tank) - 12 tph*	12-15 tph*
	(2 tanks) - 15 tph	20 tph
	(3 tanks) - 22.5 tph	35 tph
Double 5,000 gal. (18,925 liter)	12 tph	15 tph
Triple 2,200 gal. (8,325 liter)	15 tph	17 tph
Triple 3,360 gal. (12,720 liter)	20 tph (shown at left)	24 tph

All reaction tanks include agitation augers, hot oil heating with temperature control and heavy duty skid frame. *Single tank allows for only batching operation.

OPTIONS:

- 1) Smoke Filter System
- 2) Work Lights
- 3) Remote Control System
- 4) Super Sack Rubber Feed System
- 5) 5 MBTU Hot Oil Heater (125°F, 69°C AC Temperature Rise on 35 tph Blend Rate)



U.S. and International Patents Pending
VSS reserves the right to make changes in specifications at any time as part of our continuing program of product improvement. © 2020

